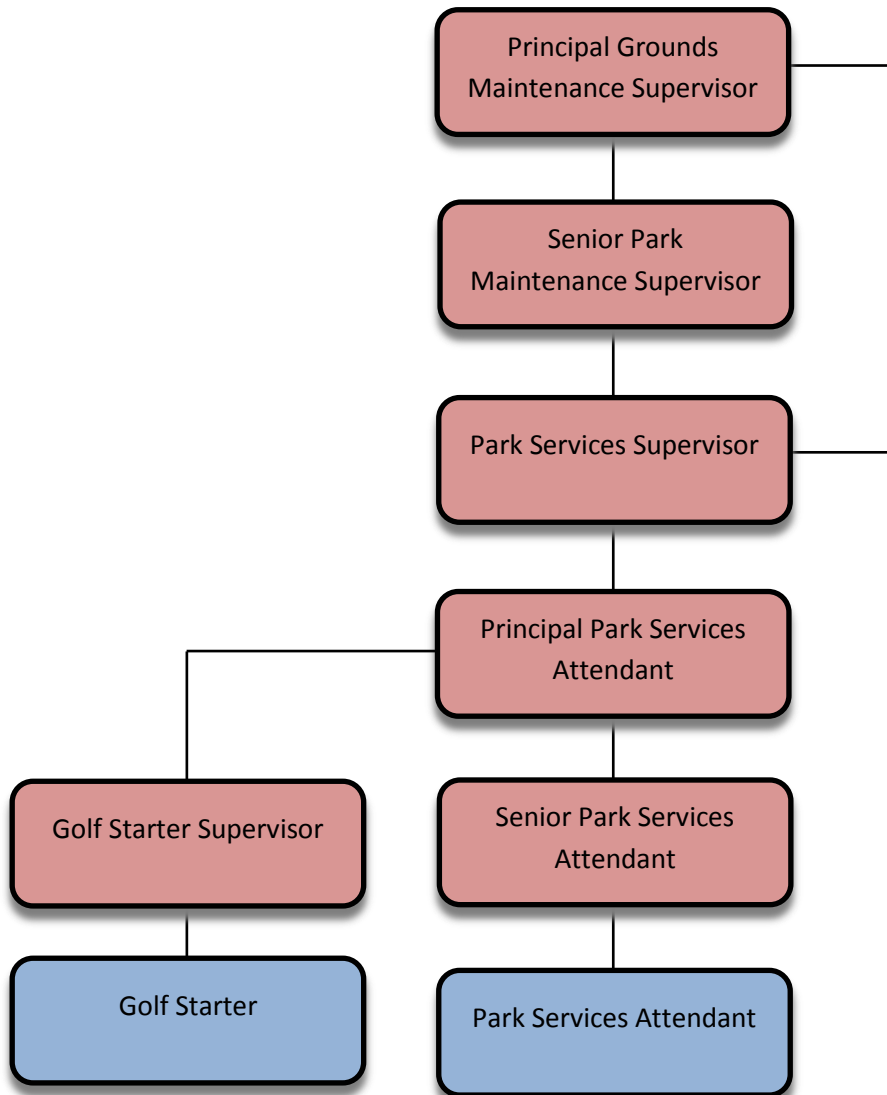


CITY OF LOS ANGELES  
PERSONNEL DEPARTMENT

### CAREER-OPPORTUNITIES FOR PARK SERVICES ATTENDANT

The following information is being given to describe potential opportunities as a Park Services Attendant. The career ladders that these titles commonly follow have been illustrated in the diagram below. With specific types of experience, promotional or lateral movement between these lines is also possible. You may review the class specifications and some job bulletins through our Personnel's Department website. It is encouraged to examine the options available, to be able to promote for what you qualify for.



<ul style="list-style-type: none"><li>■ <i>Open/Entry-Level</i></li><li>■ <i>Promotional</i></li></ul>
--